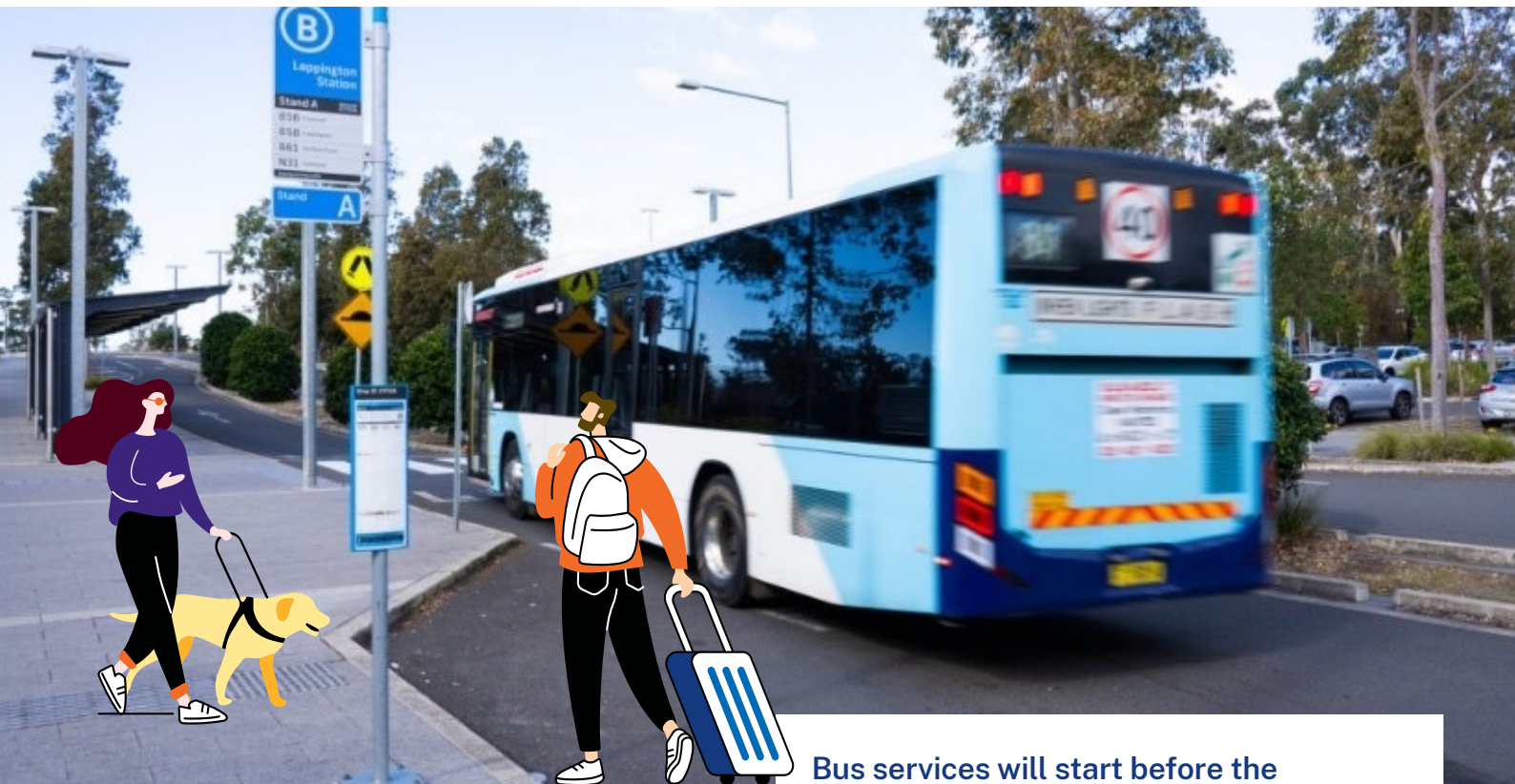


# New Bus Services to Western Sydney Airport Precinct

May 2024



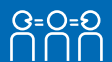
New bus services will connect Penrith, Campbelltown and Liverpool, as well as Mount Druitt and Leppington, to the new Western Sydney International Airport and Bradfield City Centre.

Bus services will start before the Western Sydney International Airport opens in 2026 to support growth across the Western Sydney Airport Precinct.

Five new bus routes will connect communities to the growing number of jobs, education and leisure opportunities being created across the Airport Precinct.



We speak your language



Call 131 450 and ask them to call 1800 684 490

# New transport network in Western Sydney Airport Precinct

Transport for NSW is building a safe, easy-to-use transport network in the Airport Precinct.

New transport services will connect communities, visitors and businesses to each other and give people better access to jobs and services, educational, cultural and social opportunities, and surrounding transport hubs.

## Work is already well underway:



**The Northern Road and Bringelly Road upgrades**  
**Complete**



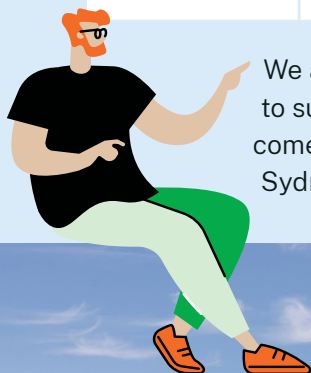
**Toll-free M12 Motorway**  
**Opening 2026**



**New bus services**  
**Starting before Airport opens**



**Sydney Metro – Western Sydney Airport**  
**Operating before Airport opens**



We are planning more services for the Airport Precinct to support growth and travel demand in the years to come. This will include a Rapid Bus Network in Western Sydney in the future.

## Connecting communities

Two new bus services from Campbelltown

- Both bus routes will serve Oran Park
- One bus route will go via the centre of Narellan, direct to the Airport Precinct
- One bus route will bypass Narellan to Leppington, where passengers can change to other bus services to the Airport Precinct or Liverpool, as well as the Sydney Trains network.

New bus services from Penrith

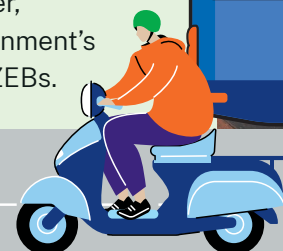
- Will provide better connections to Nepean Hospital.

To find out what other projects Transport is working on in the area, scan the QR code or visit [nswroads.work/western-sydney-airport-precinct](https://nswroads.work/western-sydney-airport-precinct)

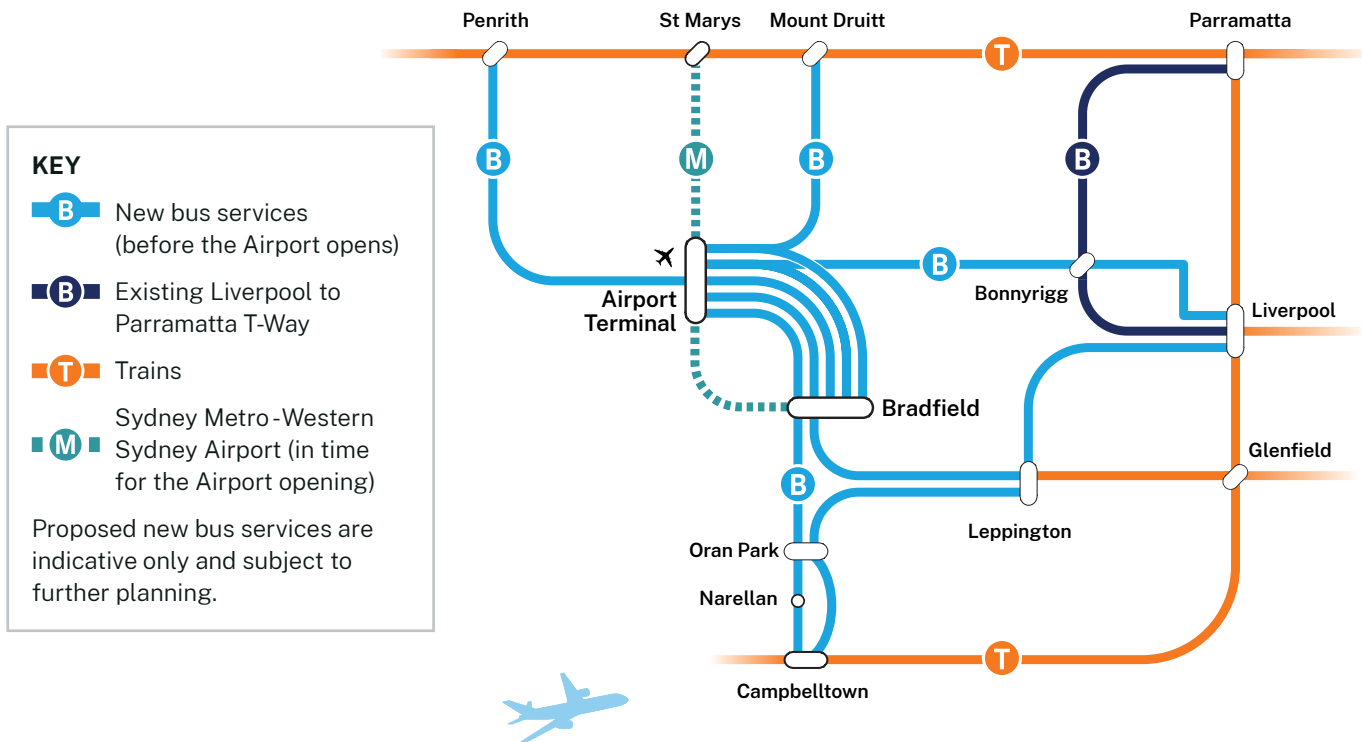


## Better for the environment

The new bus services will include Zero Emission Buses (ZEBs). These will provide quieter, smoother and more comfortable journeys for passengers, and support the NSW Government's goal of net zero emissions by 2050. Existing depots will be upgraded to cater for the ZEBs.



# New Western Sydney Bus Services



New services will mostly use existing roads so they are running as soon as possible. This includes the new bus lanes and infrastructure built during The Northern Road Upgrade.

**Buses will run: every 30 minutes, 5am to 10pm daily**

Liverpool to Bradfield, via Airport	67 minutes
Campbelltown to Airport, via Bradfield	66 minutes
Penrith to Bradfield, via Airport	60 minutes
Mt Druitt to Bradfield, via Airport	60 minutes
Liverpool to Airport via Leppington and Bradfield	55 minutes





# We want to stay connected

## New interchanges and layovers

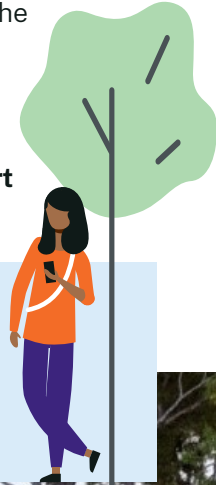
- New interchanges will be built at Bradfield City Centre and the Airport to allow passengers to easily transfer between bus and Metro services. These will be operational before the Airport opens to passengers
- **Transport for NSW will engage with key stakeholders and local landowners on plans for the interchange and layover at Bradfield over the next few months.**

## What you want from your bus network

- We want to provide new bus services that the people of Western Sydney can be proud of
- Your feedback will help us plan the new bus services plus proposed future stages of the Western Sydney bus network
- **Over the next few months we'll continue to inform the community about the new services and seek your feedback to support the growing needs of the community.**

## Find out more

Scan the QR code to find out more on Bus Services for Western Sydney or visit [www.transport.nsw.gov.au/bus-services-western-sydney](http://www.transport.nsw.gov.au/bus-services-western-sydney)



## Contact us



Project Infoline **1800 684 490**



[projects@transport.nsw.gov.au](mailto:projects@transport.nsw.gov.au)

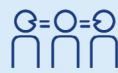


[www.transport.nsw.gov.au/bus-services-western-sydney](http://www.transport.nsw.gov.au/bus-services-western-sydney)



**For the latest traffic updates:**  
Call 132 701, visit [livetraffic.com](http://livetraffic.com) or download the app Live Traffic NSW

[www.transport.nsw.gov.au/privacy-statement#Your\\_Privacy](http://www.transport.nsw.gov.au/privacy-statement#Your_Privacy)



## Interpreter service

For languages other than English call **131 450**  
Arabic • Chinese (simplified) • Khmer • Vietnamese • Serbian

لطلب خدمة الترجمة الشفهية للغات غير الإنجليزية اتصل بالرقم **131 450**

获取英语以外的其他语言口译协助服务可以致电**131 450**

សេវាកម្មអ្នកបកប្រែផ្ទាល់មាត់សម្រាប់ភាសាផ្សេងៗក្រៅពីភាសាអង់គ្លេសសូមហៅទូរសព្ទទៅលេខ **131 450**

Để có dịch vụ thông ngôn cho các ngôn ngữ khác tiếng Anh, gọi số **131 450**

За превођење на језике осим енглеског јавите се на **131 450**